

WILDSIDE youth ministries PRESENTS

CAMP WILD

THANK YOU FOR REGISTERING FOR: JULY 11-15

As the time comes closer for your stay at Camp Wild, here are a few things to keep in mind concerning what to bring, transportation, and camper guidelines. If you have any questions or concerns, please contact our office. Premium packages will be handed out on the first day of camp.

WHAT TO BRING TO CAMP

- *Bible
- *Water bottle
- *Old closed toed shoes for the creek and walking trails
- *Bathing/Swim suits
- *Towel
- *Sunscreen
- *Bug spray
- *Pen or pencil
- *Camp Wild shirt (optional)



WHAT TO LEAVE AT HOME

- *Cell phones
- *Ipods, MP3 players, CD players, or any other similar device
- *Any type of video game or video game system
- *Flip-flops and sandals
- *Weapons of any kind
- *Shirts with foul language, tobacco, or alcohol brands displayed
- *Bad attitudes

CAMP WILD IS NOT RESPONSIBLE FOR LOST OR STOLEN ITEMS

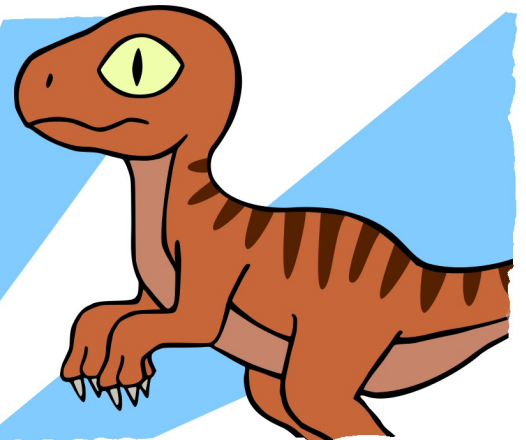
DROP-OFF AND PICK-UP INFORMATION

MORNING DROP OFF TIME: 9:45-10:00 AM

Campers may be dropped off in the mornings at the Hope Center's Gospel Trinity Center, located at 125 North Walnut Street-parking lot located off West Church Street. Please plan to arrive no later than 10:15 AM. If you are sick or unable to attend, please call and notify our office immediately.

AFTERNOON PICK UP TIME: 4:30 PM

Campers will ride the van for the duration of the route before arriving back at the Hope Center. Please allow a few minutes of leeway for traffic and other unexpected delays that may occur.



DAILY SCHEDULE

10:00- Free Time
10:20- Team Time
10:45- Theme Time
11:30- Small Groups
12:00- Lunch
12:30- Games
1:00- Head to Campground
1:15- Arrive at Campground
1:30- Daily Adventure
2:15- Structured Free Time
3:45- Closing Ceremony
4:00- Head Home

MEAL GUIDE

OUR DAILY LUNCHES
WILL INCLUDE ITEMS
SUCH AS:

*Chicken tenders
(M/W), tacos (T),
sandwiches (Th),
and pizza (F)

*Chips or
cookies

*Fruit snack
or fruit cup

*All meals are subject to
change. If these foods are
unsatisfactory please send a
lunch with your campers or
contact us to discuss an
alternative.

CONTACT INFORMATION

CAMP WILD USA
P.O. BOX 685
HAGERSTOWN, MD 21741

301.739.1165
INFO@WILDSIDEYOUTH.COM
CAMPWILDUSA.COM

If your child(ren) needs to cancel his or her week of camp, please contact our office immediately. With limited spots at camp we want to ensure that each space is filled with a camper. Camp Wild is held in English. If you need a foreign language or sign language interpreter for your child(ren) you must provide that on your own. Contact us with any concerns.

CAMP WILD IS A MINISTRY OF THE HOPE CENTER IN HAGERSTOWN, MD.